



# Division Points

Indian Nations Division of the National Model Railroad Association

[www.tulsanmra.org](http://www.tulsanmra.org)

Issue No. 69

May 2023

## PRESENTATIONS:

**Steve Shelton - New Layout, DCC selection, and using an elevator instead of a helix.**

**Jon Pansius - Handling Empty Car Orders and his car card and waybill based car routing system.**



NEXT MEETING:

May 20th

SHOW AND TELL:

Collectables/Antiques

**From the Superintendent**

(Guest Editorial...)

With a heavy heart I learned that our Superintendent's step father Tom Vanden Bosch passed away recently. Tom was a driving force on Steve's KCS layout even though he lived in California. He was a prototype modeler, and was always striving for his models to follow the prototype (and pushed Steve in that direction also!) Tom always came out and attended our LDOP's that we put on and was very enjoyable to be around. May he Rest in Peace. Steve will be attending the services back in the bay area during our meeting. Please keep Steve and his family in your prayers.

I owe an apology to Steve Campbell and Ed Bommer, MMR. I've gotten a new camera to me, and I failed to change the camera settings from what I was taking at home, so I didn't get very many photos from the meeting, and the ones I did get that I used were very low quality and grainy! (I will be sure to check that from now on!)

We have a good meeting lined up, and please bring stuff to share for show and tell, the theme is Collectibles/Antiques but as always you can share anything railroad related - model or prototype!

It seems I look forward to seeing you this Saturday!

Dave Salamon




---

## **ALL ABOARD!**

### *UPCOMING EVENTS IN OUR REGION...*

#### **Kansas City Flyer 2023**

2023 Mid-Continent  
Region Annual Convention  
Overland Park  
July 27-29, 2023

[https://www.mcor-nmra.org/  
Conventions/2023/](https://www.mcor-nmra.org/Conventions/2023/)

#### **Summer Train Show**

TTOS—Sooner Division  
\$5 adult, under 18 free with paid adult  
July 29  
Stillwater, OK

<http://www.ttos-soonerdiv.org>

#### **2023 Texas Express**

#### **NMRA International Convention**

Aug. 21-26  
Grapevine, TX

<http://2023TexasExpress.com>

#### **43rd Annual Narrow Gauge Convention**

Aug 30 - Sept 2  
Denver, Co

<https://www.43nngcdenver.com/>

## 2023 MEETINGS

Meetings are from 9:30 to 12:30

**May 20, 2023 - Antiques/Collectables**  
**September 16, 2023 - Cabooses**  
**November 18, 2023 - Structures/Dioramas**

### **Hardesty Library**

8316 E. 93rd St.

(Just East of Memorial on 93rd St.)

John W Barriger III Photo



*Cover Photo: C&IG yard, 7.5" gauge loco steaming up—Photo  
Sammy Carlile*

## INDIAN NATIONS

### OFFICERS

#### Superintendent

Steve Davis

#### Assistant Superintendent

Dave Steensland

#### Director

Raymond Brunner

#### Paymaster

Raymond Brunner

#### Achievement Program

Ed Bommer, MMR

#### Division Points Editor

Dave Salamon

## **Local Model Railroad Organizations and Shops**

#### **Indian Nations Division of the NMRA**

[www.tulsanmra.org](http://www.tulsanmra.org)

Allan Roecker  
(918)886-5732

#### **Green Country Model Railroad Association**

John Carter

Phone: (316)250-5874

[GCMRA.org](http://GCMRA.org)

[https://www.facebook.com/Green-Country-Model-Railroaders-  
Association-162356590476356/](https://www.facebook.com/Green-Country-Model-Railroaders-Association-162356590476356/)

Saturday's & Tuesday's - 9:00AM to Noon.

5626D West Skelly Drive  
Tulsa OK 74102

#### **North Eastern Oklahoma N Scalers (NEONS)**

[www.tulsa-neons.com](http://www.tulsa-neons.com)

Richard Fisher  
918-298-4800

#### **Tulsa Garden Railroad Club**

[www.tulsagardenrailroadclub.org](http://www.tulsagardenrailroadclub.org)

Donnie Shirey  
918-361-1760

#### **Oklahoma Narrow Gauge**

[www.okng.org](http://www.okng.org)

Randy Smith

#### **North Eastern Oklahoma Live Steamers**

<https://www.facebook.com/groups/1152224404840942>

Dave Salamon  
(918)607-2793

#### **Toy Train Operating Society—Sooner Division**

<http://www.ttos-soonerdiv.org/>

#### **Challenger N scale Hobbies**

8753 S Lewis Ave, Tulsa, OK 74137  
(918) 298-4800

#### **Top Shelf Models**

119 S Main St, Owasso, OK 74055  
918-274-0433

#### **Reindeer Pass Railroad**

<http://www.reindeerpass.com/>

10919 N 173rd E Ave, Owasso, OK 74055  
(918) 361-6084

#### **HobbyTown USA**

<https://www.hobbytown.com/tulsa-ok/174>

6808 S Memorial Dr #116, Tulsa, OK 74133  
(918) 307-2000

Mark  
Your  
Calendar



Mark  
Your  
Calendar

## Kansas City Flyer 2023 NMRA Mid Continent Region Convention

*Hosted by*  
Turkey Creek Division  
July 27-29, 2023  
*To be held at*  
Holiday Inn & Suites  
8787 Reeder Street  
Overland Park, KS 66214

### Registration Form

Name of Primary Registration: \_\_\_\_\_ NMRA #: \_\_\_\_\_  
NMRA membership required to enter model contest.

Spouses' Name (if attending): \_\_\_\_\_

Name of other registrants: \_\_\_\_\_

(Spouse will receive a complimentary pass for admission to the train show and contest room. Extra fare participation must be purchased for each person attending these events.)

Address: \_\_\_\_\_ City: \_\_\_\_\_ State: \_\_\_\_\_ Zip: \_\_\_\_\_

E-mail: \_\_\_\_\_ Phone: \_\_\_\_\_

**Registration Fee** (NMRA membership number required for reduced registration fee.)

NMRA member \$95.00 per person (Includes Banquet)

Non-member - \$110.00 per person (Includes Banquet)

Banquet Choice (choose one per person)  Chicken  Shrimp Pasta  Vegetarian

Cost	# Tickets	Total Cost

**Extra Fare Reservations:**

**Banquet only - \$35.00 per person**

Banquet Choice (choose one per person)

Chicken  Shrimp Pasta  Vegetarian

--	--	--

**Lunch \$20.00 per person**

Lunch Choice (Friday) (choose one per person)

Italian Sub  Chicken Wrap  Veggie Wrap

--	--	--

Lunch Choice (Saturday) (choose one per person)

Italian Sub  Chicken Wrap  Veggie Wrap

--	--	--

**TOTAL REGISTRATION:** \_\_\_\_\_

**Vendor Tables:**

Train Show - Friday July 28th and Saturday July 29<sup>th</sup>

\$30.00 per table

# Tables	
----------	--

**VENDOR REGISTRATION** \_\_\_\_\_

**Send Completed Registration Form and payment to:**

Bill Humenczuk  
8624 W 116<sup>th</sup> Street  
Overland Park, KS 66210-2828  
Make checks payable to: Turkey Creek Division

For additional information contact Larry Alfred  
(913)782-6584  
[captlalfred@gmail.com](mailto:captlalfred@gmail.com)

**MAKE HOTEL RESERVATIONS WITH HOTEL**

Holiday Inn & Suites  
8787 Reeder Street  
Overland Park, Kansas 66214  
(913)888-8440  
Rate: \$99.00 (includes breakfast)  
Ask for **MCoR** group rate  
To register online:  
<https://tinyurl.com/ak5d4w7a>



SUPERCHARGED - HIGH SPEED - EXTRA POWER

# TEXAS EXPRESS

**AUGUST 20-26, 2023**  
**Dallas/Fort Worth TEXAS**



2023TEXASEXPRESS.COM



**NMRA** *National Convention*




# *National Convention*

2023TEXASEXPRESS.COM

MAXIMUM HORSEPOWER - HIGH SPEED

# TEXAS EXPRESS

**AUGUST 20-26**  
 Dallas Fort Worth **TEXAS**




## Santa Fe Stock car - Bartlesville display - Jay Hastings

In a rather quick move made on May 3rd, a crane company was contacted which was already in Bartlesville working on the removal of the old Caney River Bridge. It took the crew about four hours to lift the ATSF cattle car and roll the caboose and tank car to the rear position of the display.

The Cattle car was placed in the consist just behind the ATSF 940 2-10-2 steam locomotive. The two cars now represent the oil and cattle business which were major customers of the Santa Fe Railroad in this area.





Friends of the 940 negotiated a 25-year lease with the Osage County Historical Society for \$1 a year.

The 40-foot long cattle car was built as a box car between 1923-25. In approximately 1946, it was converted to a stock (cattle) car by replacing the solid wood sides with wood slates to create ventilation for the animals inside the car. The cars ends and roof are steel.

The Friends of the 940 are displaying it in front of the Bartlesville Depot along with Santa Fe steam locomotive No. 940, the "Flying A" Associated Oil tank car and the caboose.





While there are no plans of adding any further cars to the display, the [Friends of the 940 group](#) is always in need of donations to help maintain and improve the display.







# AT&SF No. 940

[Home](#) | 
 [Donate](#) | 
 [Her History](#) | 
 [Photo Gallery](#) | 
 [In the News](#) | 
 [Your Stories](#) | 
 [The Crew](#) | 
 [Buy a Candle!](#)

All aboard donors! Help complete the Santa Fe Waycar restoration project



\$0



90%



\$140,000

## Links

- Bartlesville Community Foundation →
- City of Bartlesville
- Bartlesville Area History Museum →
- Bartlesville Convention and Visitors Bureau →
- Bartlesville Regional Chamber of Commerce →
- Facebook
- Bartlesville Radio
- Examiner Enterprise
- Keepsake Candles



Come ride the rails with us!

get your ticket today and join us for our 3rd annual Oil Flyer train ride. Only 300 tickets left, and we WILL sell out. Check out our [facebook page](#) to get more information.

Click [here](#) to Read more.

**No. 940 t-shirts and candles are for sale now. Click for more information.**



**WELCOME!**

## February 2023 Meeting

### Howe truss carfloat transfer bridge — Ed Bommer, MMR

Ed started out with a history of car floats in the NYC area, then expanded with the prototype howe truss carfloat bridge that was going to be modeled.

He then went into detail on how he designed his O scale model and how he built it. Outlining the step he used and the details and weathering techniques used.



## February 2023 Meeting (Cont'd)

### Weathering Freight Cars — Steve 'Doc' Campbell

Steve went over the techniques that he uses to weather his freight cars, including weather the wheelset.



Frisco 153197

Note how brushed with black chalk the Ship it side has taken off the stark white -

Also note how rivets stand out -

And note unpolished wheel treads -

These are cast (not turned) wheels - they will polish but not as well as turned wheels

Compare wheel treads with SLSF 7298 with turned Inter mountain wheels



## February 2023 Meeting

### Calaveras Cement—Dave Salamon

Dave started out with a brief history of Portland cement process, and then shared the inspiration for his cement plant, looking at prototype plans, photos, and track diagrams along with

## Calaveras Cement- Hastings Plant On the Deep River Southern

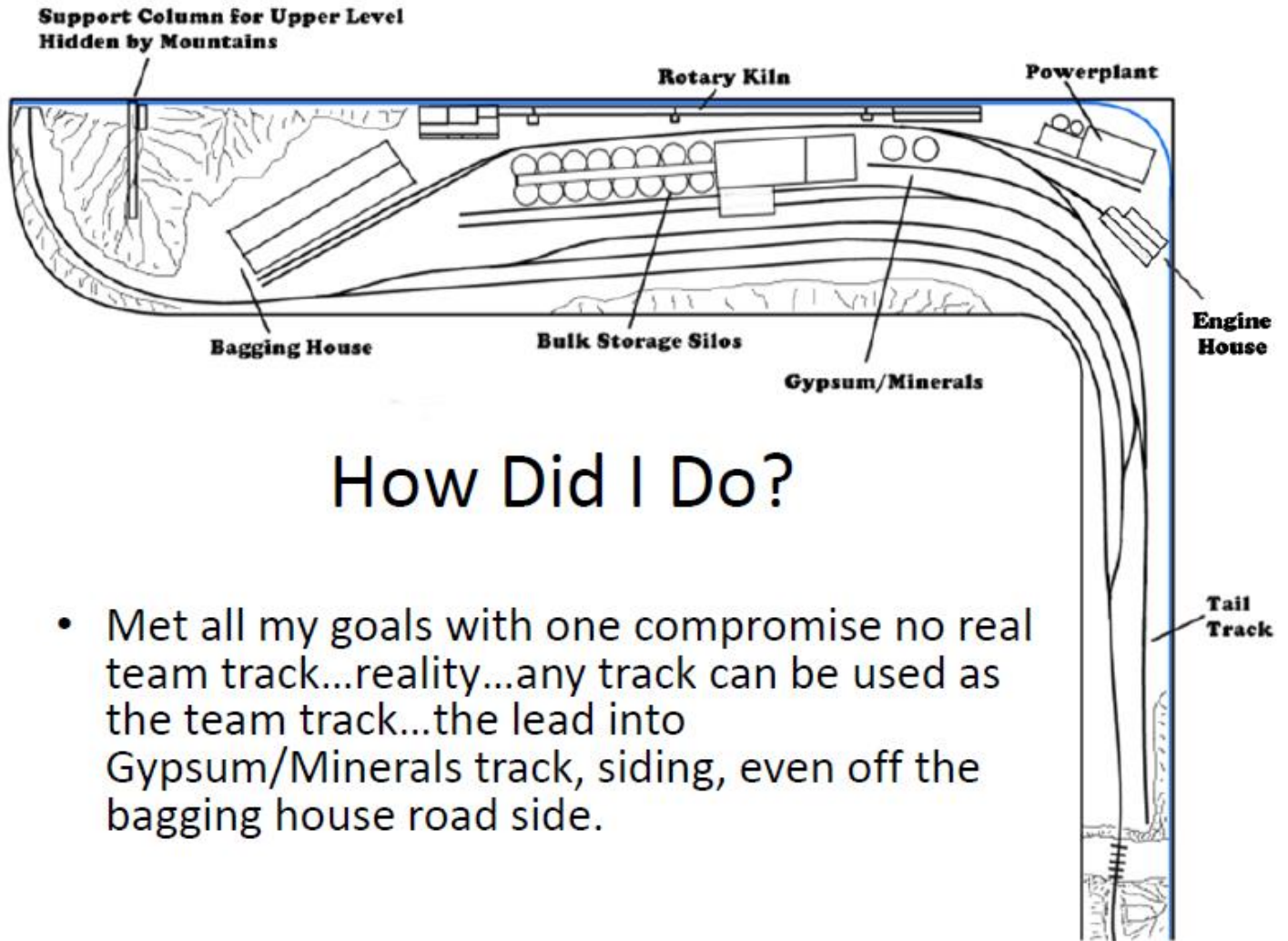


cement plants that are on other model railroads. Armed with that information he designed a cement plant for his Deep River Southern Railroad on his upper level branch line. After sharing the concept and design he went into how he used photos along with his painting to expand the background, how he kit-bashed structures to fit the area, the operating scheme and the recently added dimension of sound to the scene.

### Where did it all start for me?



## February 2023 Meeting (Cont'd)

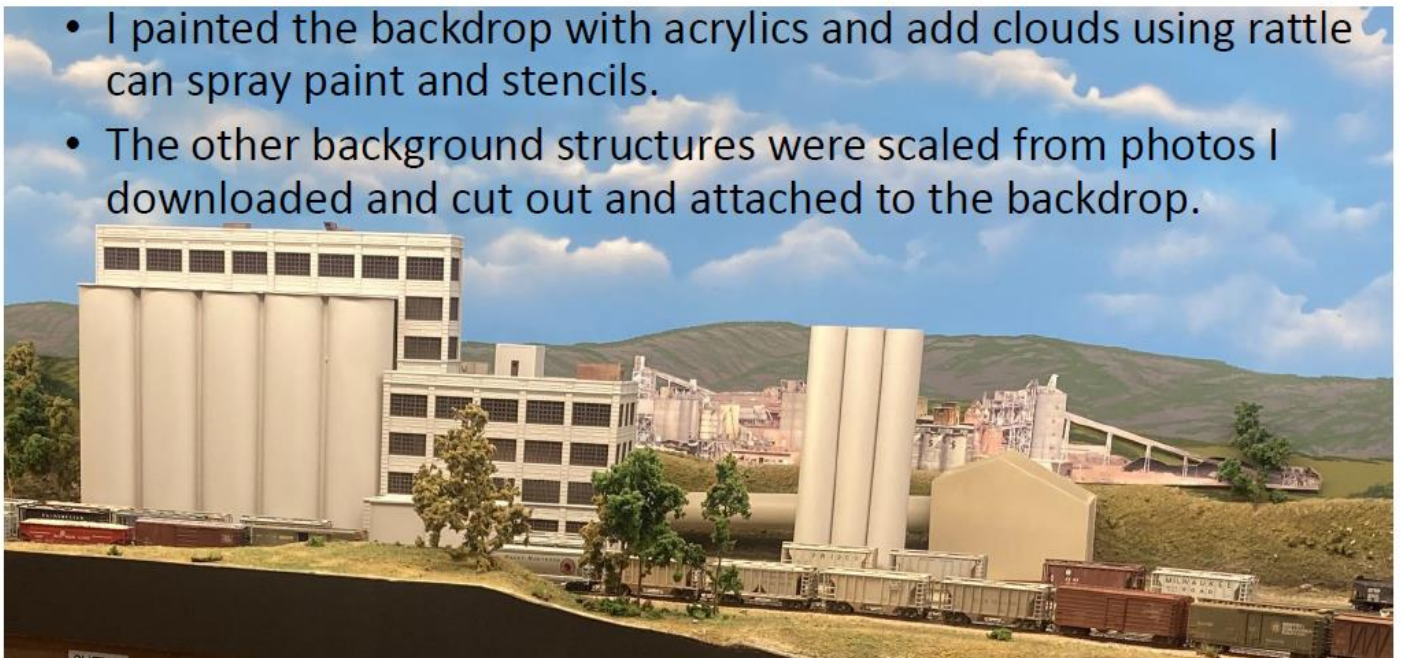


### How Did I Do?

- Met all my goals with one compromise no real team track...reality...any track can be used as the team track...the lead into Gypsum/Minerals track, siding, even off the bagging house road side.

### Backdrop

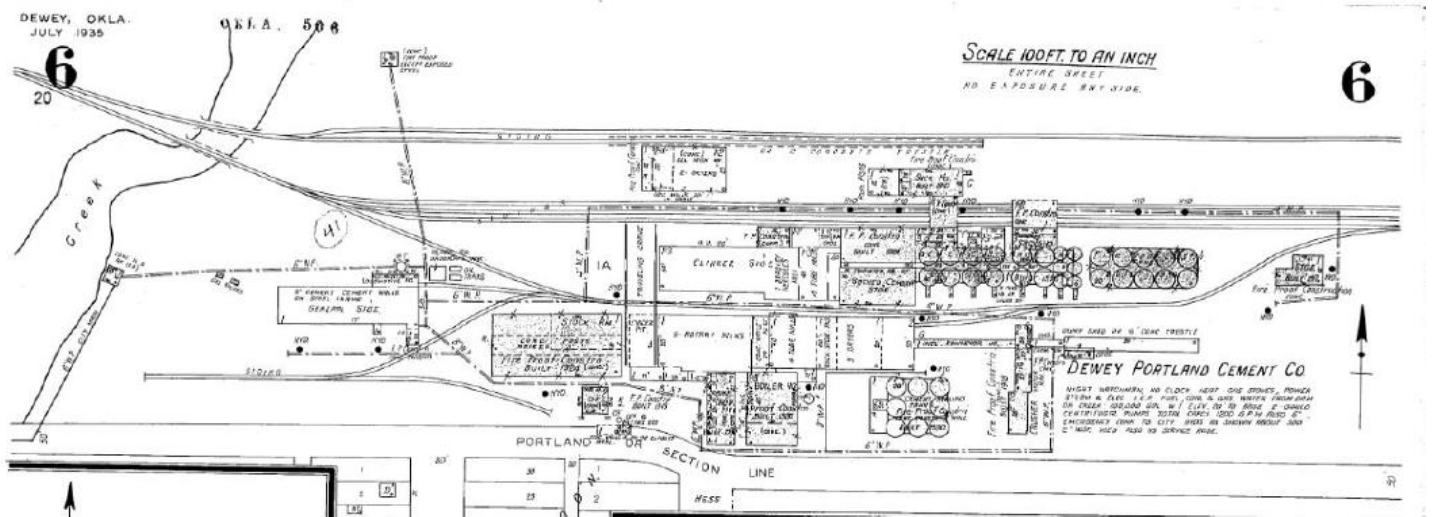
- I painted the backdrop with acrylics and add clouds using rattle can spray paint and stencils.
- The other background structures were scaled from photos I downloaded and cut out and attached to the backdrop.



# February 2023 Meeting (Cont'd)



## Sanborn Map from Jay Hastings



## Comanche & Indian Gap Operations - Sammy Carlile

I was introduced first hand to the Comanche and Indian Gap Railroad last spring thanks to a connection I made with another modeler on the internet from Texas who shared my deep interest with the Santa Fe railroad. He invited myself and my oldest son down to the Texas hill country to the Spring Fling operations meet. Needless to say, we had a great time. This year, the meet happened during finals week, so my son couldn't attend so I recruited a few more like minded gents from the Tulsa area who also share my enjoyment of the Santa Fe and railroad operations. And, once again, we had an absolute fantastic time. Our host had an extra train that needed to be ran and we were the crew for it. Every crew on a train should need an engineer, a conductor and a rear end brakeman, right? We thought so too, so it worked out perfectly for us.

Sammy Carlile, Jay Hastings and Marc Montray in their happy place on the C&IG.



The View from the Dublin Pig Train.

## Comanche & Indian Gap Operations - Sammy Carlile

The C&IG is located south of Comanche, TX, near Priddy. It's a 7.5" gauge railroad build on 35 acres and has been in operation since the late 1970's. It was designed by Roy Pickard and was built for operations from the very start. It's a point to point design with return loops on each end of the railroad. There are many spring switch equipped passing sidings to make meets and there are also several areas along the line for switching. In addition to a few yards, there is also a lengthy branch line (The Rabbit). The two main dispatchers are located in a tower at the middle of the railroad and communicate with the train crews via FRS radios. Timetable operations commence during the week of the meet and Saturday is basically open running. During busy periods, it's possible to have over a dozen trains out running on the railroad so the dispatchers stay busy and the crews must really pay attention to their orders to insure safe operations. As long as the weather cooperates? It's a great time for all involved. The meets are by invitation only and they are first rate, with RV spots available, catered lunches and dinners served on site daily..

Jay Hastings with a watchful eye as he is the engineer on the Dublin Pig Train.

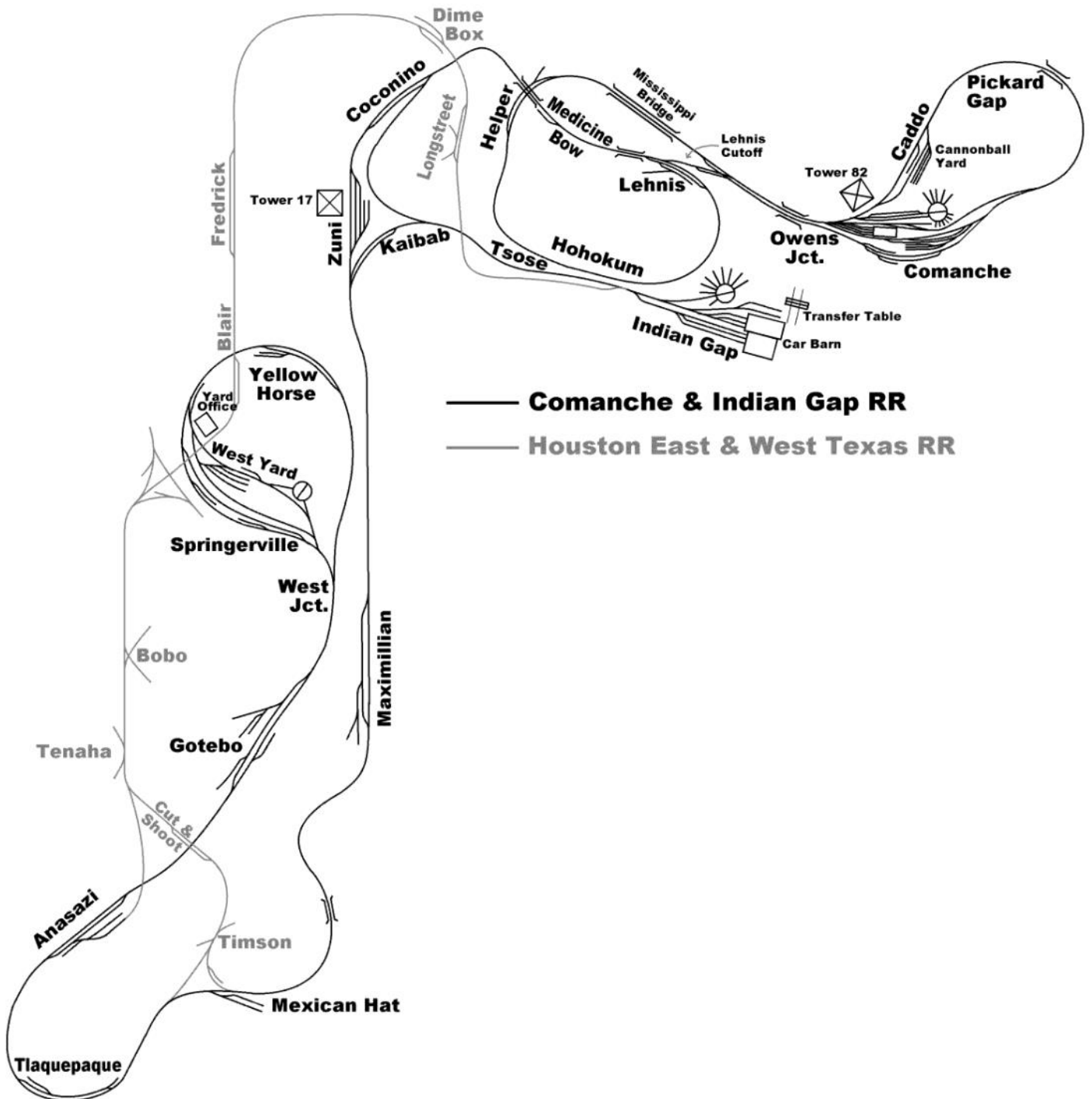


Marc Montray doing what Marc loves to do, keep them running!



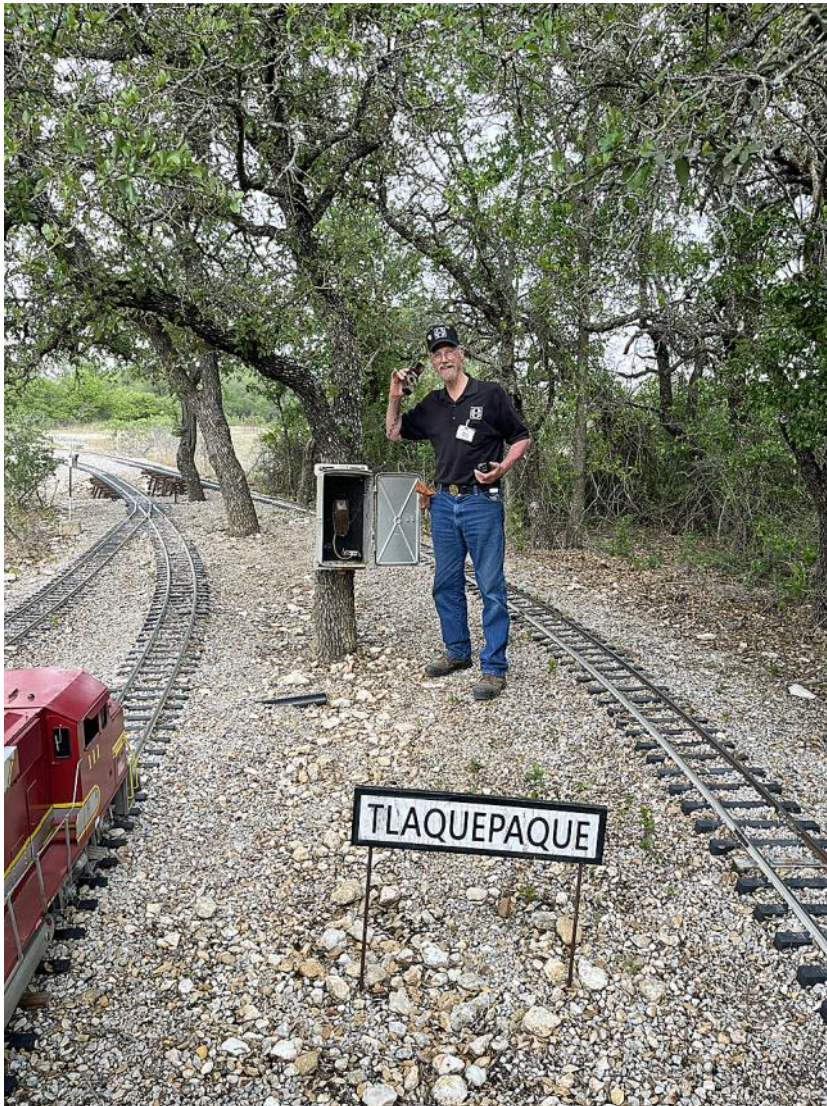
# Comanche & Indian Gap Operations - Sammy Carlile

Track plan of the Comanche and Indian Gap Railroad



## Comanche & Indian Gap Operations - Sammy Carlile

Sammy Carlile at the controls of the Super Chief waiting for clearance to Depart Zuni. Danny Click looking over Sammy's shoulder to make sure he takes care of his Super Chief....



Marc Montray trying to contact the dispatcher at Tlaquepaque.

## Comanche & Indian Gap Operations - Sammy Carlile



Shane Murphy at the controls  
of his T&P Steam engine.



Greg Udolph steaming through the yard.



Tomas Sandoval IV's Tex-Mex passenger train.

# WHAT'S NEW ON YOUR LAYOUT????

(Please email Dave Salamon—[drs\\_rr@yahoo.com](mailto:drs_rr@yahoo.com) with any layout updates or projects you'd like to share with the members)

Charlie Tapper has started his layout, using shelf brackets to support the layout.



# Introducing the best deal in model railroading.

**Join the NMRA for 9 months for just \$19.95!\***

- Get discounts from free shipping to 20% off (or more) from manufacturers of all sizes who've partnered with the NMRA
- Contact other NMRA members anywhere in the world for layout tours, train chat or even op sessions through our Model Railroad Directory
- Get access to more than 20,000 photos, slides, plans, drawings, paint schemes and more with the NMRA Online Archives
- Receive 9 monthly issues of *NMRA Magazine*
- Receive reduced rates on layout or collection insurance
- Take part in programs like Modeling with the Masters, the Achievement Program, Estate Counseling, contests, clinics, and more!
- Attend events at your local Division or Region

## Sign me up!

Fill out this form and include your payment.

**U.S.:** Send \$19.95 (U.S.) to NMRA-RailPass Membership, P.O. Box 1328, Soddy Daisy, TN 37384

Name \_\_\_\_\_

Address \_\_\_\_\_

City/State/Zip \_\_\_\_\_

Phone (\_\_\_\_) \_\_\_\_\_

Email \_\_\_\_\_

Check  Credit card

Credit Card # \_\_\_\_\_

Expiration \_\_\_\_\_ Security Code \_\_\_\_\_

Signature \_\_\_\_\_



**So much bang.  
So few bucks.**

\*RailPass offer is for new members and those who haven't been NMRA members for two years or more. Individuals can join at RailPass rates only once. Membership renewal will be at the regular membership rate. RailPass members can attend conventions and participate in contests, but cannot vote or hold office.

# SHOW AND TELL



Steve Campbell—HO Scale



# SHOW AND TELL



Dave Salamon—N Scale



# SHOW AND TELL



Ed Bommer, MMR—O scale



# Tony's Tips and Techniques

By Tony Burgess

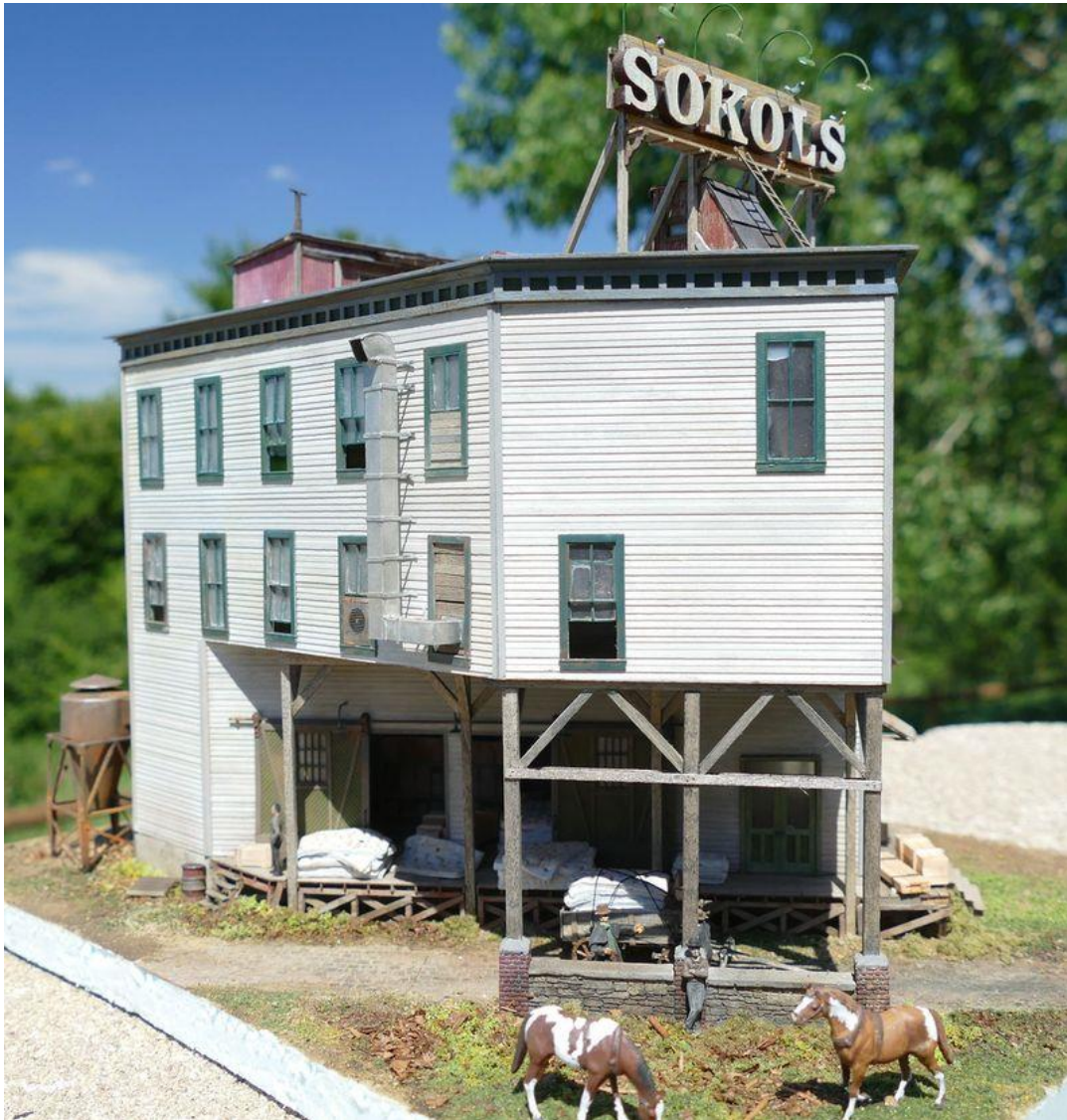
As I wind down the series I just wanted to share a collection of some of the completed structures Tony had built. He was truly a craftsman, and he is missed. I'm glad that he wrote the many detailed instructions of how accomplished the effects you see in these images and encouraged me to share those with you all.



# Tony's Tips and Techniques



# Tony's Tips and Techniques



# Tony's Tips and Techniques



# Tony's Tips and Techniques

:



# Tony's Tips and Techniques

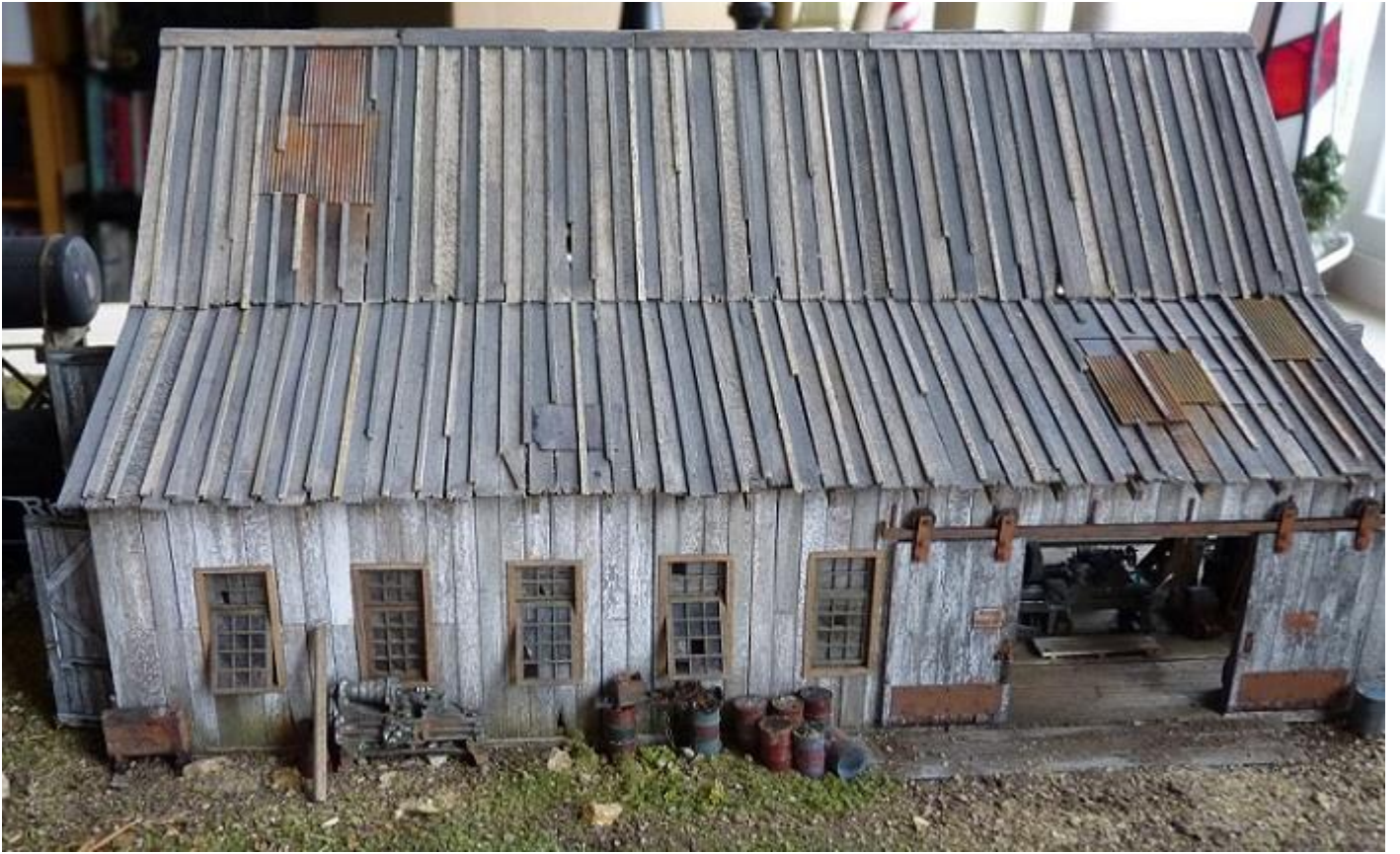
:



# Tony's Tips and Techniques



# Tony's Tips and Techniques





# Tony's Tips and Techniques



# Tony's Tips and Techniques



# Tony's Tips and Techniques



# Tony's Tips and Techniques



# *From the Archives...*





The Super Chief at Anasazi on the C&IG—Sammy Carlile

Indian Nations Division  
Dave Salamon  
17924 E. 92nd Street North  
Owasso, OK 74055

